

# Fine Art A Level



## INTRODUCTION TO THE DEPARTMENT

We are a Central London Art Department committed to developing our students' creativity, independent thinking and cultural capital. We study AQA Fine Art and expect students to develop their own ideas and find ways of expressing them. A-Level students work in an experimental way in response to briefs set by the teacher as well as investigations they set for themselves. We are a small department so we enjoy taking opportunities to work with outside agencies to expand opportunities and enable students to engage as much as possible with the London art world.

### HEADS OF DEPARTMENT

Jenny Bucknall  
and Paula Pearson

### EMAIL ADDRESS

info@gch.org.uk

### EXAM BOARD

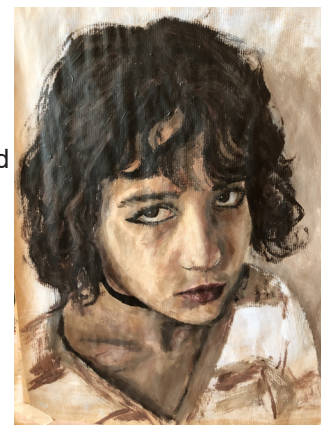
AQA

## COURSE DESCRIPTION

The course aims to:

- Develop in candidates an understanding of the nature of visual thinking
- Encourage experience in a wide range of materials
- Help to develop an understanding of cultural change and contextual studies
- Develop an awareness of both analytical and intuitive value judgements

Students will be required to produce sketchbooks, work journals, and final pieces for internal and external moderation. Students who study Art at The Grey Coat Hospital spend the first year broadening and deepening their understanding and skills. They visit galleries, attend workshops and develop their own projects. All students at A Level are introduced to the life model through life drawing classes. In the summer term of Year 12 they start working towards Component 1 of the A-level, their Personal Investigation.



## COMPONENTS OF STUDY

### Component 1 – Personal investigation (60%)

In Component 1, students develop work based on an idea, issue, concept or theme leading to a finished outcome or a series of related finished outcomes. Practical elements make connections with some aspect of contemporary or past practice of artist(s), designer(s), and photographers and include written work of no less than 1000 and no more than 3000 words which supports the practical work.



### Component 2 – Exam (40%)

In Component 2, students respond to a stimulus, provided by AQA, to produce work which provides evidence of their ability to work independently within specified time constraints, developing a personal and meaningful response which addresses all the assessment objectives and leads to a finished outcome or a series of related finished outcomes.

## PROGRAMME OF STUDY

### Component 1

Personal Investigation

Practical work supported  
by written work  
of between  
1000 - 3000 words

60% of total A Level

### Component 2

Exam (over 3 days)  
15 hours

40% of total A Level

### Exhibition

Students will curate an  
exhibition of their work to  
be displayed in school in  
May of Year 13.

Course Requirements  
Minimum Grade 6 at  
GCSE Art and English

### Other Information

The key to success  
in the A Level course  
is enthusiasm and  
dedication, excellent  
drawing skills  
independent research,  
consistent hard work,  
reviewing and improving  
work as you go along,  
making sure that you  
work to deadlines and  
being fully aware of how  
you are being assessed.

## EXAMINATION RESULTS

In 2024 students achieved 63% A\*-A and 100% A\*-B in A level Art. The results over the last 5 years have averaged 97% A\*-B. We are exceptionally proud of our students.

Every year, the majority (but not all) of our A level students progress to study art and design on both Foundation Diplomas and in some cases directly on to Honours degrees. Each year we have students progressing to degrees in Architecture, recently at The Bartlett School of Architecture (University of London) Sheffield and Bath Universities. Every year students take up places on Foundation Diplomas at UAL, Kingston, and The Royal Drawing School.

Within each cohort there are students enjoying and benefit from Art A level who are taking it as a subject to complement their other subjects and progress to university to study in the wider arts or sciences.

## ENRICHMENT ACTIVITIES

### Residential Trips

We offer the opportunity for all Art students to go on an annual Sixth Form trip to Berlin or Florence. On these trips, students have the opportunity to visit, in Berlin the Pergamon Museum, The Hamburger Bahnhof Gallery, The Berlinische Gallery and The East Side Gallery, and in Florence, the Uffizi Gallery, Galleria dell'Accademia, the Duomo, and the Medici Palaces.

### Further opportunities:

- Life drawing
- Take part in ARTiculation, a national public speaking competition
- The Attract Programme at the Royal Academy
- Join the Tate Collective
- Chance to exhibit in a commercial London Gallery
- Numerous visits to galleries such as The Tate, RA, Hayward, Saatchi, White Cube, Whitechapel
- Help design and paint the set for the school play
- Help run KS3 Art clubs and support GCSE students



## FUTURE CAREERS

Every year our A Level students go on to Foundation Courses at London Art colleges such as the Royal Drawing school, Kingston University, University of the Arts (Camberwell and Central St Martins) Working Men's College in Camden, Kensington and Chelsea College and Ravensbourne or directly onto degree courses at Universities and Art colleges such as Glasgow, Oxford (the Ruskin), Kingston and Leeds.

Students' degrees prepare them for careers in Art and Design including Media, Interior Design, Fashion, Jewellery, Ceramics, Product Design, Theatre and Film, Theatre/Set Design and Fine Art.

We provide portfolio workshops and practise interview sessions.

